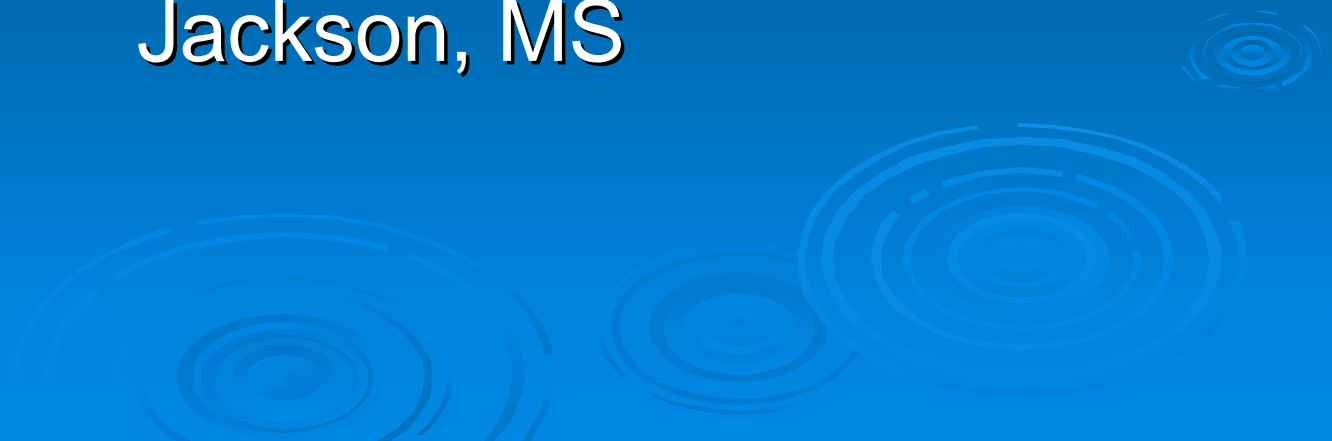


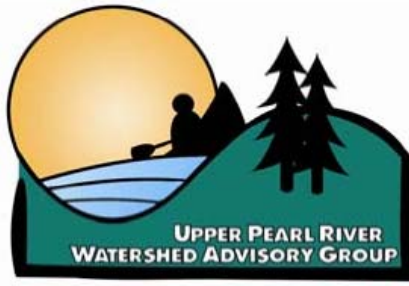
Pearl River Basin Symposium

May 5-6, 2006

MS Museum of Natural Science

Jackson, MS

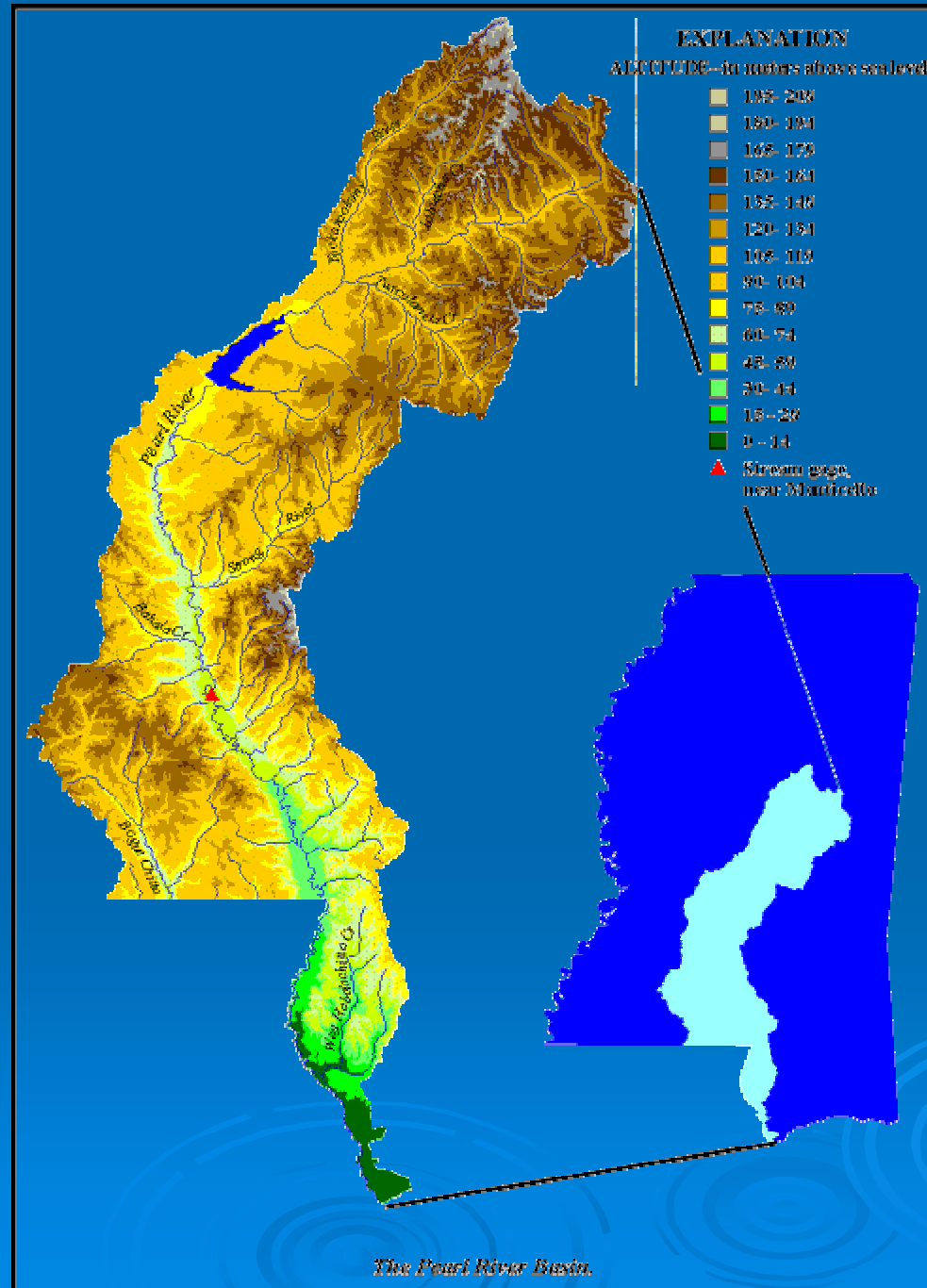




Upper Pearl River Watershed Advisory Group

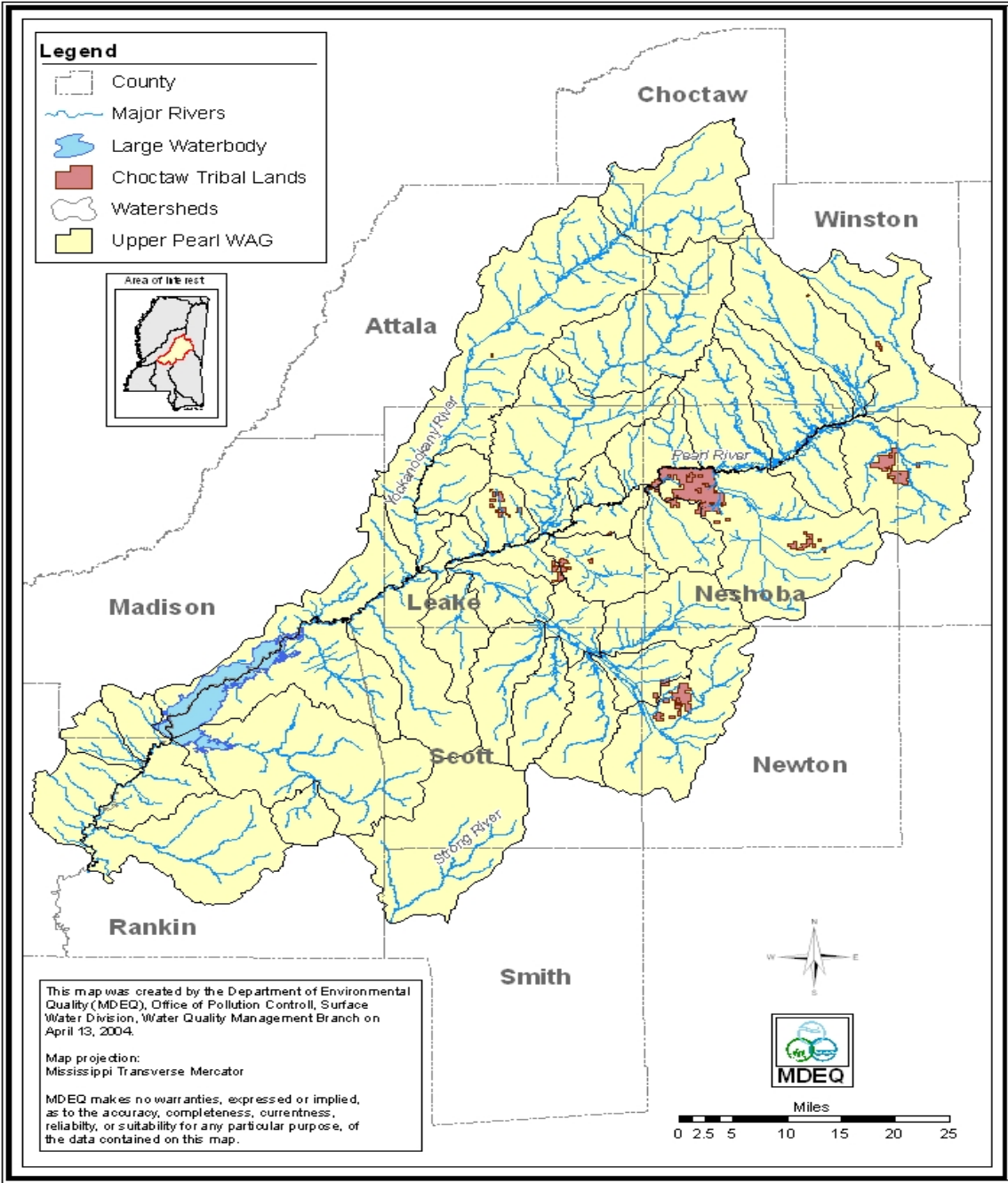
- Coordinate natural resource management and planning within the Upper Pearl River Watershed
- Prioritize resource issues of concern
- Assist in the implementation of specific actions related to water quality and quantity, recreation, habitats, etc.

Pearl River Basin



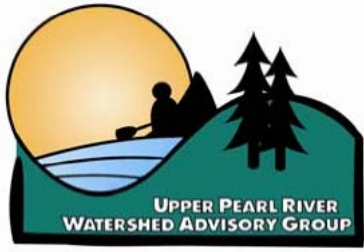
Map by USGS

Upper Pearl River Basin



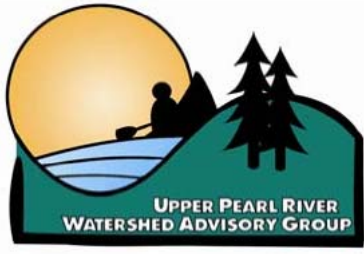
Upper Pearl River

- Little commercial use
- Heavy urban use in lower part of watershed
- Home to Ross Barnett Reservoir
 - Drinking water source for City of Jackson
 - Important recreation area



UPR-WAG Promotes:

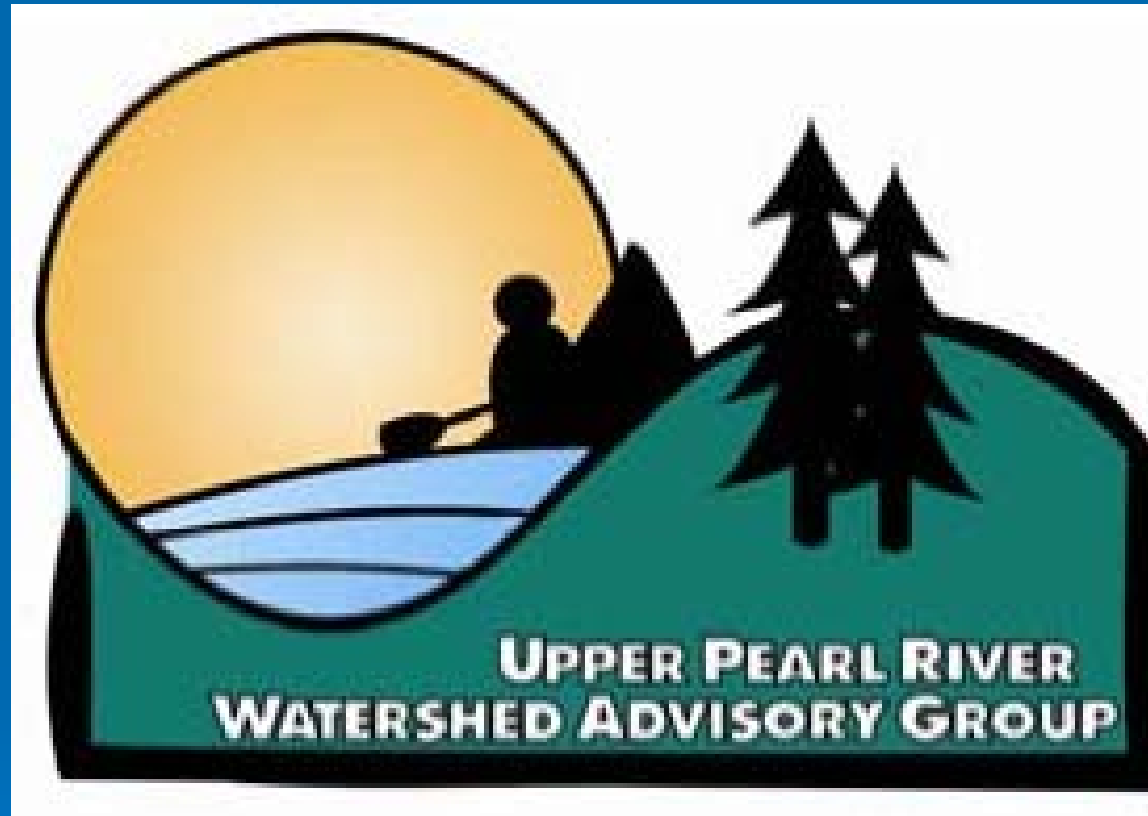
- Broad stakeholder involvement
- Balance recreation, economic development, and environment
- Sustain and improve habitats and watershed resources
- Effective watershed management practices through project support



UPR-WAG Supported Projects:

- Mill Creek – sedimentation concerns from new development
- Fannegusha Creek – Sediment concerns from agriculture and forestry
- Strong River – Pathogens concerns from septic systems and animal wastes
- Source Water Protection Workshop

UPR-WAG WELCOMES YOU!!



Visit our website:
www.upperpearl.org

The background of the slide is a light yellow-green color with a faint, repeating pattern of rice stalks. On the left side, there is a vertical rectangular inset showing a close-up of rice stalks in silhouette against a bright, hazy sky. The main title is centered in a white rectangular box with a thin black border.

Agriculture in the Pearl River Basin



Mississippi Agriculture and Forestry Impacts

- Farm and Ranch Acres: 11,050,000
- Total Production Market Value: \$6.2 B
- Number of Farms: 42,186
- Ave. Production Value per Farm: \$147 K



Mississippi Agriculture and Forestry Impacts

- Forested Acres: 19,800,000; 69% owned by PNIL (13,600,000 acres)
- Harvest Timber Value: \$1+ B
- 34% of MS Workforce Attributed to Agriculture and Forestry



Major Ag Sectors

- Poultry (broilers)
- Forestry
- Livestock and Dairy
- Row crops
- Horticulture



Poultry

- Number 1 ag commodity in Mississippi with \$1.97 billion production value in 2005
- Heavy concentration in PRB
- 832 million broilers sold statewide in 2005
- Production in PRB Counties:
 - Approximately 603,919,550 broilers
- Major Counties: Top 5 in State
 - Scott; Smith; Neshoba; Simpson; Leake
 - Also are PRB Counties



Forestry

- 19.8 million forested acres in Mississippi
- Forest regeneration has occurred on 1,210,209 acres from 2000-2004 (per MFA)
- Forestry is number 2 commodity in MS
- Important for rural and economic development, wildlife habitat, and recreation



Livestock and Dairy

- **Cattle**
 - Over a million head of cattle in MS
- **Dairy**
 - Less than 200 dairy farms currently in MS
 - Down from 631 in 1992
 - Approximately 102 located in PRB Counties (pre-Katrina); numerous dairies lost or out of business
- **Swine**
 - Not a significant presence in the Basin



Row Crops

- Row Crop acres (cotton, corn, soybeans) have continuously decreased
- Examples:
 - Leake County: 8,600 acres in 1990; now less than 1,057 acres
 - Scott County: 12,620 in 1990; now less than 4,344
 - Attala County: 13,128 in 1991; now approx. 8,614

Forested acres have dramatically increased



Horticulture

- Growing blueberry sector
- Other high value products
 - Fruits and vegetables
 - Nurseries and ornamentals



Changes in the Landscape

- Commodity price volatility
- High input costs (fertilizers, fuel, equipment, etc.)
- Urban pressures
- Conservation Programs
 - Conservation Reserve Program
 - Wetland Reserve Program
 - Wildlife Habitat Improvement Program
 - Other programs and initiatives



Changes in the Landscape

- **Conservation Programs**

- **Conservation Reserve Program**

- UPR Basin Acres: 55,213 acres in 1990; 72,611 acres in 2005
- 267,000 acres in the PRB counties

- **Environmental Quality Incentives Program (EQIP)**

- Significant funding increase over last couple of years
- Focus: NPS Water Quality; Air Quality; Erosion/Sedimentation; Wildlife Habitat



Changes in the Landscape

- **Invasive Species**
 - Plants: Cogongrass
 - Animals: Feral hogs
 - Aquatic Plants: Water hyacinth
 - Others: Microbial; Aquatic animals; etc.
- **Must be vigilant in recognizing, controlling, and ultimately eradicating invasive species**



Future Directions for Ag Lands

- **Natural Resource-Based Enterprises**
 - Supplemental or primary income opportunities from farm or forested lands
 - Rural economic development
 - Habitat improvements
 - Sustainable land management
 - MSU demonstration and landowner education programs



Future Directions for Ag Lands

- **Ag and Forestry-Based Energy**
 - Utilization of abundant resources
 - Further protection of environmental receptors
 - Rural economic development
 - Increase of domestic energy supplies
 - Reduction of foreign energy dependence



Thanks for your time!

Brent Bailey

Mississippi Farm Bureau Federation